

MARCH/APRIL 2025

# ARCHIBUILD

**20**  
STUNNING  
OFFICE/MALL  
PROJECTS

**39**  
IMPORTANT  
FIRE SAFETY  
MEASURES

**40**  
DOORS &  
WINDOWS  
TRENDS



The 22<sup>nd</sup> Edition

# MEGABUILD INDONESIA



## “ INNOVATING FOR SUSTAINABLE TOMORROW ”

The Enhanced Edition of Building Materials,  
Interior Design, Architecture, Construction  
Exhibition & Conference in Indonesia

📍 Jakarta International Convention Center

📅 24 - 27 April 2025

### Why visit Megabuild Indonesia?



#### 150+ Exhibitors

Showcasing the latest innovations in building materials, architecture, interior design, and smart home technologies



#### 20+ Speakers

From industry associations, architects, and key experts sharing their knowledge



#### 300+ Products and Brands

From leading local and international companies



#### Green Haven House Installation

A real-life installation of sustainable living innovations and The first-ever house installation in building material exhibition



#### 30+ Product Highlight Presentation

Live product demonstrations & presentations in the Sandbox Area

### Exhibiting Brands



and many more!

### Don't miss out!

Register now and claim your FREE ticket

[www.megabuild.co.id/ticket](http://www.megabuild.co.id/ticket)

or scan here



Get the latest updates by following us on:



megabuildindo



MEGABUILD Indonesia



MEGABUILD Indonesia



megabuildindo



megabuildindo

# Contents

## MARCH/APRIL 2025

### 4-19 News

A news round up from the world of architecture and construction

### 20-21 Office Project: TSLAW Tower

TSLAW Tower exemplifies contemporary architectural excellence

### 22-23 Office Project: Yanmar Tokyo

The Yanmar Tokyo is a ship-like building with an iconic facade

### 24-25 Office Project: The Bay Hub

The Bay Hub is a new urban landmark in Kowloon

### 26-27 Retail Project: Huafa New Town Phase Six

This development provides a central and vibrant live-play environment

### 28-29 Dato' Vincent Lim, Joint Organiser, ARCHIDEX, Interview

Why ARCHIDEX 2025 will be the most dynamic and expansive edition yet

### 30-31 Interview with Dr. Srilalitha Gopalakrishnan

Dr. Srilalitha, President of SILA, talks about SILA turning 40 this year

### 32-34 Preview of Architect'25 Expo, Thailand

### 35-38 Review of BAU 2025 Trade Fair, Munich

### 39 Special Focus: Fire Safety

Experts comment: Important fire safety measures for fire protection

### 40-41 Product Focus: Windows & Doors

Developments in windows & doors: Industry players share their insights

### 42-46 Events Calendar

## WELCOME



Amita Natverlal

Hello readers! Welcome to the second issue of Archibuild.

In this issue, we look at the design concepts of office building and retail mall projects.

You will also find insights from industry players on the topics: fire safety and doors & windows.

If you're planning to attend the ARCHIDEX 2025 and ARCHITECT'25 shows, do read the articles to get some latest information. There's also a review of BAU 2025 fair, Munich.

The Singapore Institute of Landscape Architects turns 40. Read about its achievements inside. Enjoy this issue and take care!

### PUBLISHER

New Reach Media Pte Ltd

EDITORIAL & ADVERTISING Amita Natverlal

### CONTACT US

TELEPHONE: 0065 91260431

EMAIL: [amita@newreachmedia.com.sg](mailto:amita@newreachmedia.com.sg)

Co. Reg. no.: 202447508K

### FOLLOW US ON:

[www.facebook.com/archibuildmag](https://www.facebook.com/archibuildmag)

[www.x.com/archibuildmag](https://www.x.com/archibuildmag)

[www.instagram.com/archibuildmag](https://www.instagram.com/archibuildmag)



### COVER:

TSLAW TOWER

PHOTOGRAPHY:

UIG ARCHITECTS SDN BHD

### EDITORIAL AND ADVERTORIAL CONTENT DISCLAIMER POLICY

This digital publication is published bi-monthly by New Reach Media Pte Ltd. The Publisher reserves the right to accept or reject all editorial or advertising material. The mention of a product or service, person or company in this publication does not indicate the Publisher's endorsement. The views expressed in this publication do not necessarily represent the opinion of the Publisher or the Company. Reproduction of this digital publication, in whole or in part, is prohibited without the prior and written consent of the publisher. The publisher cannot be held responsible for any errors or for any consequences arising from the use of the information contained in this digital publication. While every attempt will be made to ensure the accuracy and authenticity of information appearing in the magazine, the publisher accepts no liability for damages caused by misinterpretation of information, expressed or implied, within the pages of this magazine.

## BDO Unibank Inc. Campus in Manila breaks ground

A recent ceremony marked the groundbreaking of BDO Unibank Inc. Campus on Manila's Makati Avenue. Foster + Partners' design for the bank's new headquarters is tailored to meet the company's current and future needs. Departing from the typical model of airconditioned high-rise office towers in the city, the practice's design learns from vernacular architecture and is highly responsive to the humid tropical climate.

Luke Fox, Head of Studio, Foster + Partners, said: "The new BDO campus offers a new model for the next generation of highly flexible and climatically responsive workplaces in the Philippines. Our holistic approach encompasses every element of the design – from the structural and environmental engineering to the landscaping and interiors – allowing us to create something completely bespoke and driven by extensive environmental analysis."

The project makes a positive contribution to Manila by transforming five separate urban plots into a singular integrated campus. Two high-rise towers touch the ground lightly and frame a new triple volume public space that is sheltered from heavy rainfall and direct sun exposure. The open ground plane incorporates lush planting and an array of artworks, to enhance the public realm and improve the quality of life in the city.

From the ground plane, staff and visitors can access an elevated reception that connects them to the office tower and key podium spaces, including the business centre, public museum and canteen. The 3,000-metre-square meeting and event space acts as one of the primary areas for the bank to engage with its broad customer base. A new public museum hosts temporary exhibitions and showcases the bank's permanent collection of artworks.

Massing steps back at regular intervals, with triple-storey amenity spaces located at every successive setback. The amenity floors incorporate generous outdoor terraces, which offer panoramic views of the Makati skyline and enhance employee wellbeing. Additionally, an urban farm on the roof of the auditorium annex provides space for community activities and contributes to the staff canteen's farm-to-table approach.

The design team has carried out extensive solar analysis on the façades to determine which areas receive the highest levels of sun exposure. These areas are shaded by the woven metal mesh infill screens that are inspired by traditional weaving patterns. At night, the facade is illuminated by

concealed interior light fittings, such that the building appears as a softly glowing lantern.

Roland Schnizer, Senior Partner, Foster + Partners, said: "The structure of the buildings is intentionally placed on the outside of their envelopes to actively shade the facades, while achieving an efficient structural design in a seismic zone. The exoskeletons create column free spaces internally and support external solar shading screens."

The practice has carefully evaluated the most carbon and energy efficient solutions at every step of the design process, integrating embodied carbon and whole lifecycle carbon calculations into the daily workflows. A lightweight structural system reduces the concrete content of the buildings by more than 65,000 tons, while simultaneously improving performance in the seismic context of the Philippines.

The buildings' operational energy has been reduced by more than 40 percent, allowing BDO Unibank to pursue a Green Mark Super Low Energy certification, which is a first in the Philippines. More than 70 percent of potable water is recycled and re-used on site and radiant cooling systems drastically reduce energy demands, while improving occupant comfort and health. The use of renewable energy sources will allow the scheme to achieve Green Mark Net Zero Energy status in the future.



The project makes a positive contribution to Manila by transforming five separate urban plots into a singular integrated campus. Copyright holder: Foster + Partners

# WELCOME TO architect'25

THE ASEAN'S LARGEST BUILDING TECHNOLOGY EXPOSITION

29 APRIL – 4 MAY 2025 | IMPACT, BANGKOK



## FAST FACTS

EXHIBITOR

1,000+

INTERNATIONAL  
EXHIBITORS

30%

VISITORS

320,000+

EXHIBITION  
SPACE

75,000 SQ.M

WITNESS A HIGHLIGHT OF  
"THEMATIC PAVILION"

BRIDGING BUILDING MATERIAL, ART, AND DESIGN : UNITING CREATIVITY IN PROJECTS



\*The images shown are from the previous edition of the expo and may not be an exact representation of the booth.

For more information please **contact** at

Email: [info@TTFintl.com](mailto:info@TTFintl.com)

Website: [www.ArchitectExpo.com](http://www.ArchitectExpo.com)

Facebook: [ASA\\_EXPO](https://www.facebook.com/ASA_EXPO)

## HDB to extend cool coatings initiative to all existing HDB estates

HDB will intensify its sustainability efforts to create more energy-efficient and climate-resilient public housing estates, with the 10-year Green Towns Programme (GTP) reaching its mid-point in 2025. The GTP aims to bring sustainable living to all existing HDB towns through large-scale implementation of green features to improve residents' quality of life. It is a key initiative under the Singapore Green Plan to build a more sustainable future for Singapore in the face of climate change.

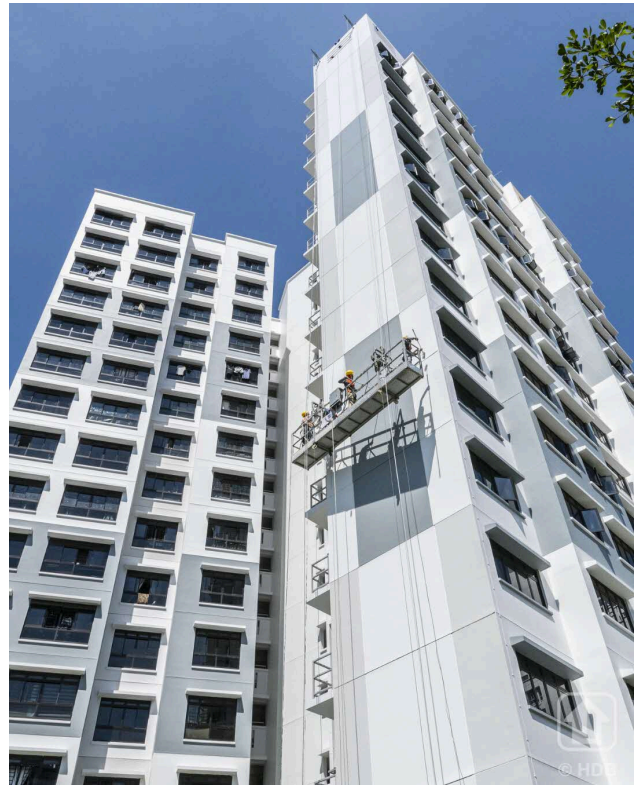
To mitigate the effects of urban heat due to climate change, HDB has been studying the use of cool coatings, which is a type of specialised paint that reflect the sun's heat, thereby reducing surface heat absorption and emission. A two-year study in Tampines showed that cool coatings reduced ambient temperatures by up to 2°C, and residents living in blocks painted with cool coatings also experienced a reduction in electricity consumption, as less energy from air conditioning systems is needed to cool their flats. Following this successful pilot, HDB will be extending the initiative to all existing HDB estates islandwide by 2030.

### New Initiatives to be Added to Green Towns Programme

New initiatives were also added under the GTP to stretch HDB's sustainability targets. They are:

#### (A) Smart Electric Sub-Meters

From 2Q2025, smart electrical sub-meters will be installed in the consumer switch rooms of HDB blocks, collecting data so HDB and Town Councils can monitor and analyse energy consumption patterns and the performance of common services such as lighting, water pumps, and lifts. Town Councils can also use the data to optimise the maintenance cycles of common services and detect anomalies such as equipment faults, to minimise inconvenience to residents.



HDB is extending the cool coatings initiative to all existing HDB estates by 2030. HDB's 2-year pilot study in Tampines has shown that cool coatings reduced ambient temperature by up to 2°C. Households in blocks painted with cool coatings also needed to use less energy to cool their flats. Photo credit: Housing & Development Board

#### (B) Green Complexes

To reduce the carbon footprint of its buildings, HDB will be upgrading 38 HDB-managed complexes by 2030. The complexes will include features such as solar panels, more energy- and water-efficient fittings, and food waste composting machines.

#### (C) Beverage Container Return Points

Under NEA's Beverage Container Return Scheme, a network of over 1,000 return points will be deployed islandwide from 1 April 2026, including at HDB-owned and Town Council spaces close to homes.

**Got A Story?  
We want to hear from you.  
Email us the story.**



# ASIA POOL & SPA EXPO 2025

**May 10<sup>th</sup>-12<sup>th</sup>, 2025**

China Import & Export Fair Complex, Guangzhou



25000 Sq.m



300 Exhibitors



15000 Visitors



Website: [www.asiapoolspaexpo.com](http://www.asiapoolspaexpo.com)



E-mail: [info@grandeurint.com](mailto:info@grandeurint.com)

## Market evolution meets design innovation: LED Expo Thailand evolves into ASEAN Light + Design Expo



*Text by Ishaan Hans*

As markets evolve, so do the demands of industries. Trends change, technology advances, and the future of lighting and design unfolds. After pioneering ten successful editions, LED Expo Thailand has become a niche hub for the lighting industry, fostering networking, innovation, and progress. However, the time has come for a transformation beyond just being a marketplace – it's time to innovate, recreate, and shift the focus to design, aesthetics and collaboration.

With this in mind, the show organisers MEX Exhibitions Pvt. Ltd. and IMPACT Exhibition Management Co., Ltd. ("IMPACT") are excited to announce a complete evolution of LED Expo Thailand into ASEAN Light + Design Expo 2025. This isn't merely a name change – it marks a full-scale revamp of the event that reflects the industry's ongoing metamorphosis.

ASEAN Light + Design Expo will continue to serve as the premier destination for sourcing all lighting needs while expanding its scope to become a vibrant forum for showcasing the latest trends in lighting design and technology.

The new expo will celebrate the synergy between lighting and design, where functionality meets creativity. Beyond simply displaying products, the event will highlight the most innovative, aesthetically driven lighting solutions through dynamic installations, inspiring workshops, and hands-on experiences.

Professionals in the lighting and design industries will be able to engage with cutting-edge solutions, tools, and techniques that address the ever-changing market dynamics.

For buyers and sellers alike, ASEAN Light + Design Expo is set to be more than just a trade show – it's a bustling marketplace of ideas, collaboration,

and transformative solutions. Attendees will witness the industry's brightest minds come together, creating an environment where creativity flourishes and new opportunities are born. The show will also feature captivating lighting installations, creating an atmosphere akin to a lighting festival, ensuring no industry professional will want to miss this immersive experience.

In addition to lighting, the event will spotlight the booming Smart Technologies sector, which has emerged as a key driver of modern lifestyle design. With the global smart home market projected to reach \$313.95 billion by 2026, demand for smart home products, office solutions, and building automation technologies continues to rise. The co-located Smart Living Expo will offer insights into cutting-edge innovations that integrate smart technologies into homes and offices, enhancing design and functionality.

As the show organisers prepare for this exciting transformation, they invite industry professionals, designers, innovators, and business leaders to be part of ASEAN's largest hub for lighting and design. Join them in this evolving journey, and be a part of a community where creativity, collaboration, and innovation converge under one roof.

This is your chance to be at the forefront of an industry reshaping how we think about lighting, design, and modern living.

### Show Info

Dates: 17-19 September 2025

Venue: IMPACT Exhibition Centre, Bangkok, Thailand



ASEAN

# LIGHT + DESIGN EXPO

SHAPING  
THE FUTURE OF  
LIGHTING &  
DESIGN

17 · 18 · 19  
SEPTEMBER 2025

Hall 5, IMPACT Exhibition &  
Convention Centre Bangkok, Thailand

Formerly Known As



## KEY EXHIBIT PROFILES



**SMART &  
CONNECTED  
LIGHTING**



**ECO-FRIENDLY &  
SUSTAINABLE  
LIGHTING**



**HORTICULTURE  
LIGHTING**



**OUTDOOR  
LIGHTING**



**RETAIL  
LIGHTING**



**HOLIDAY  
LIGHTING**



**DESIGN IN  
LIGHTING**



**HEALTHCARE  
& SOCIAL CARE  
LIGHTING**



**INDUSTRIAL  
LIGHTING**



**EVENT &  
STAGE LIGHTING**



**ARCHITECTURAL &  
DECORATIVE LIGHTING**

SCAN TO  
BOOK YOUR BOOTH NOW



Organisers:



INTERNATIONAL EXHIBITOR QUERY

Himani Gulati  
Email: [himani@mexexhibits.com](mailto:himani@mexexhibits.com)  
Mob: +91-9312285142hibitor Query

Gaurav Juneja  
Email: [gaurav@mexexhibits.com](mailto:gaurav@mexexhibits.com)  
Mob: +91-9810301644



LOCAL (THAILAND) EXHIBITOR QUERY

Ajjima Roysri Boere  
Email: [ajjimarb@impact.co.th](mailto:ajjimarb@impact.co.th)  
Mob: +66(0)2-833-5315

Chotika Kraiakson  
Email: [chotikaK@impact.co.th](mailto:chotikaK@impact.co.th)  
Mob: +66(0)2-833-6395

Website: [www.aseanlightdesignexpo.com](http://www.aseanlightdesignexpo.com)

## IES and SP jointly hold World Engineering Day 2025: Charles Rudd Distinguished Global Lectures

On 11 February 2025, the Institution of Engineers, Singapore (IES), in collaboration with Singapore Polytechnic (SP), proudly presented the World Engineering Day 2025: Charles Rudd Distinguished Global Lectures (WED 2025: CRDGL) at the Singapore Polytechnic Convention Centre.

Held as a prelude to WED for Sustainable Development on 4 March 2025, this event convened leading experts, innovators and thought leaders from the global engineering community to share insights, explore emerging technologies and address engineering challenges shaping our future.

Themed 'Towards a Sustainable World: Engineering the Way Forward', this year's lectures spotlighted two critical topics: Circular Economy and Resilient Future. With intensifying global challenges such as climate change, urbanisation and resource depletion, this event underscored the critical role of engineering in advancing the United Nations Sustainable Development Goals (SDGs).

The Minister of State for Home Affairs and National Development, Associate Professor Dr Muhammad Faishal Ibrahim, was the guest of honour at the event.

The two distinguished keynote speakers were Ms Tita Yowana Alwis, Minister Counsellor, Head of Economy – Indonesia Embassy and Mr Kelvin Wong, Chief Executive Officer of Building and Construction Authority (BCA). Their addresses provided valuable insights into the intersection of engineering and sustainable development, inspiring participants to envision bold new pathways to a better future.

The panel discussion titled 'Navigating the Future: Circular Economy and Building Resilience' featured an influential lineup of experts, moderated by Professor Seeram Ramakrishna, Professor of



Photo credit: The Institution of Engineers, Singapore (IES)

Mechanical Engineering at the National University of Singapore and Chair of the Sustainability Cluster at IES.

Attendees had the opportunity to participate in breakout activities, including learning journeys, technical talks and seminars, designed to foster collaboration and innovation in engineering solutions for sustainable development.

"WED 2025: CRDGL seeks to broaden public appreciation of the impact of engineering – showcasing its role in solving global challenges. By exploring the circular economy and resilient future, we aim to deepen appreciation for engineering as a driver of innovation – turning challenges into opportunities and forging solutions that balance progress with long-term sustainability," said Er. Chan Ewe Jin, President of IES.

Endorsed by seven sponsors and over 45 local and international organisations, the three-hour hybrid lecture attracted more than 1,000 local and overseas participants.

## Meraas launches City Walk Crestlane, bringing waterfront living to Dubai's urban heart

Meraas, a member of Dubai Holding Real Estate, has announced the launch of City Walk Crestlane, a premium residential development with panoramic water views in the heart of Dubai's urban landscape. The initial launch comprises two mid-rise towers: City Walk Crestlane 2 and 3, offering 394 modern residences, set against a backdrop of water features, pools and lagoons. Khalid Al Malik, Chief Executive Officer of Dubai Holding Real Estate, stated: "City Walk Crestlane marks a significant milestone in Dubai's luxury real estate sector, introducing



Photo credit: Meraas

waterfront living at the heart of the city. This development represents a harmonious blend of modern design, connectivity and community, responding to the growing demand for premium urban residences while setting new standards in sustainable community design."



# INTERNATIONAL FLOORING & SURFACE SHOW

**17-20  
September  
2025**

Indonesia Convention Exhibition (ICE)  
BSD City - Indonesia

***Empowering  
the Flooring Industry  
with Solutions for  
Every Space and Need***

Organized by

**wakeni**  
Exhibition & Convention • Expert  
PT WAHANA KEMALANIAGA MAKMUR

**traya** events

[www.floortechindonesia.com](http://www.floortechindonesia.com)

**SCAN  
HERE  
FOR MORE  
INFORMATION**



## AECOM to deliver Investigation Study for Hong Kong's first Wetland Conservation Park in the Northern Metropolis

AECOM announced it has been selected by the Civil Engineering and Development Department (CEDD) and Agriculture, Fisheries and Conservation Department (AFCD) of the HKSAR Government to deliver the Investigation Study for Sam Po Shue Wetland Conservation Park (SPS WCP). Spanning 348 hectares, the SPS WCP is the first WCP to be established under the WCPs System proposed under the Northern Metropolis Development Strategy released in 2021, with the WCPs System aiming to conserve the wetlands with ecological values in the Deep Bay, increase environmental capacity for the Northern Metropolis, and achieve co-existence of conservation and development. AECOM will provide comprehensive services for the investigation stage of the SPS WCP, including preliminary design, engineering infrastructure works, wetland enhancement, landscaping, environmental sustainability integration, digital monitoring, and park management. The establishment of the SPS WCP shall enhance the ecological quality and biodiversity of the Northern Metropolis, provide high-quality outdoor eco-education and eco-recreational facilities to the public, as well as

Proposed site for the future "Sam Po Shue Wetland Conservation Park". Photo credit: AECOM



introduce modernized and sustainable aquaculture into the WCP. "We are honoured to contribute to this pioneering project within the Northern Metropolis," said Simon Wong, vice president of AECOM's Land Supply/Municipal Division in Hong Kong. "Bringing together the expertise of our ecologists, scientists, engineers and designers, along with internationally respected consultants from various disciplines, we look forward to creating a WCP that contributes to transforming Hong Kong's New Territories North into a nature-positive Northern Metropolis. Through this collaboration with CEDD and AFCD, we will showcase biodiversity and aquaculture in harmony in the SPS WCP and the wide range of benefits that nature-based solutions (NbS) can offer."

## Woolpert welcomes Chief Information Officer with Geospatial, M&A, tech startup experience

Woolpert has hired Chief Information Officer Carl Lucas to oversee IT development, integration, and security for the firm's expanding global architecture, engineering, and geospatial (AEG) operations and artificial intelligence technologies. Working with Woolpert's leadership team, Lucas will help bolster the firm's cybersecurity and IT bench strength, improve the IT integration processes for acquired firms, and drive a holistic AI programme designed to support the firm's corporate services, internal IT, generative AI, and operational needs.



Lucas has provided IT strategy and leadership for a variety of tech startups, Fortune 500 companies, and private equity-backed firms. He comes to Woolpert with over 30 years of global IT experience, including 10 years within the geospatial industry. "I'm honoured to join Woolpert at this

incredibly exciting time in the company's history," Lucas said. "I'm looking forward to leading transformative global IT initiatives and AI innovations that will support Woolpert's strategic vision and add value for customers and employees." Before joining Woolpert, Lucas served as vice president of information technology at NV5. He focused on technology advancement and scalability for the firm's geospatial solutions unit, overseeing its global technology systems, operations, cloud services, and IT security. "Carl's experience leading technology organizations for innovative, rapidly growing organizations is an ideal match for Woolpert's growing global business," Woolpert President Neil Churman said. Lucas earned his bachelor's degree in astrophysics from the University of Rochester. He holds a professional certificate in Management and Leadership from Massachusetts Institute of Technology and a professional certificate in Innovation and Entrepreneurship from Stanford University.



Hosted by



**THE 10<sup>th</sup>**  
**INDONESIA LARGEST REFRIGERATION,  
HVAC AND ENERGY EFFICIENT  
TECHNOLOGY EXHIBITION**

[www.refrigeration-hvacindonesia.com](http://www.refrigeration-hvacindonesia.com)

**24- 26 SEPTEMBER 2025**

Jakarta International Expo (JIEXPO) Kemayoran, Indonesia

**BOOK  
YOUR  
SPACE  
NOW**

Organized by



in collaboration with



refrigeration-hvac-indonesia



RHVAC Indonesia



@rhvacindonesia



Pelita Promo Internusa

## 2025's most anticipated sports & entertainment infrastructure project – the Populous-designed Kai Tak Sports Park – opens in Hong Kong



The project partners of KTSP celebrate. Photo courtesy: Kai Tak Sports Park Limited



The KTSP at night. Photo courtesy: Kai Tak Sports Park Limited

One of the world's largest community use sports developments, designed by leading global sports and entertainment infrastructure design firm Populous, has officially opened in a spectacular ceremony in Hong Kong on 1 March 2025 prior to it hosting the iconic Rugby Sevens in late March and Coldplay's world tour in April.

The 28-hectare, city-shaping HK\$30 billion Kai Tak Sports Park, which is situated on the site of the former Kai Tak Airport in Kowloon, is the world's window to Hong Kong's major events.

Fans don't have long to wait to get the best sports view in the city when the marquee Hong Kong Sevens tournament is held at Kai Tak Stadium from 28 to 30 March, just two weeks prior to international rock band Coldplay hosting its Music of the Spheres World Tour at the stadium.

Populous brought its leading architecture, brand, interior and wayfinding experts from Hong Kong and across Asia and Australia to deliver the venue, which has already become one of the world's great sporting landmarks before a player even steps foot on the pitch.

Populous Senior Principals and Co-Managing Directors APAC Richard Breslin and Paul Henry were at the opening with their team taking in the excitement of seven years of meticulous design work. And they will be there again with their colleagues on the South Terrace at Kai Tak Stadium when the Sevens rugby matches kick off later this month.

"Kai Tak Sports Park has taken what was an underutilised area of Hong Kong and given it back to the community to enjoy. It's a city-shaping asset



Populous Senior Principals and Co-Managing Directors APAC Richard Breslin (left) and Paul Henry (right) were at the KTSP opening. Photo courtesy: Populous

that Populous has been instrumental in designing and I'm proud to be here tonight watching these world class facilities be unveiled. I can't wait to be up on the South Terrace for the Sevens when the Stadium's turf is christened in a few weeks," Mr Breslin said.

The South Terrace at Kai Tak Stadium offers an event platform that is the world's window to sport in Hong Kong. It allows spectators to immerse themselves in the action while the impressive glass curtain wall behind them provides panoramic views of Victoria Harbour and seamlessly connects the Stadium to the city's vibrant landscape. "The South Terrace will translate the atmosphere that the Populous designed Hong Kong Stadium generated, particularly for the Sevens, on the grand old lady of So Kon Po's South Stand for the past 30 years," Mr Breslin said.

## UOL, Singland and CapitaLand Development unveil PARKTOWN Residence, largest integrated development in Singapore



Image credit: UOL

PARKTOWN Residence, the largest residential and lifestyle development integrated with a transportation hub in Singapore, will feature 1,193 residential units seamlessly connected to a diverse mix of retail spaces, dining options and enrichment schools. It will also include a green boulevard that forms part of the newly opened Tampines Boulevard Park, a supermarket, a community club and a hawker centre. It will be directly linked to the future Tampines North MRT station on the Cross Island Line and a bus interchange, offering residents easy access to other parts of Singapore.

The project is a 50:50 joint venture between UOL-SingLand and CLD.

UOL Group Chief Executive Liam Wee Sin said: “PARKTOWN Residence is a fully integrated development that enfold a green boulevard where you can feel the immensity of space within a five-hectare site. It stands out as the first mega property launch of the year in Tampines, one of the most popular mature residential estates in Singapore. We are excited to unveil the concept of upscale living in a one-stop lifestyle hub, blending high-quality amenities with high liveability.”

CLD (Singapore) Chief Executive Officer Tan Yew Chin said: “What sets PARKTOWN Residence apart is its vision of a home inspired by nature. This self-

sustaining community landmark brings together convenience, connectivity and liveability under one roof, with amenities including enrichment schools, a supermarket, a hawker centre, a community club, and an integrated transport hub. With a retail mall spanning over 146,000 square feet, PARKTOWN Residence represents a vibrant and thriving community. Residents can also enjoy an active, eco-conscious lifestyle with access to a growing cycling network that will connect them to Pasir Ris, East Coast Park and the Round Island Route.”

The design of PARKTOWN Residence draws inspiration from the shape of Tampines town, which resembles a leaf with a vein network that represents interconnected roads, rail lines, park connectors and cycling paths. Outdoor enthusiasts can also explore green spaces like Tampines Eco Green, which is home to various natural habitats such as freshwater wetlands and a secondary forest. Within the development, residents will enjoy a comprehensive range of facilities spread across four thematic zones: The Aquatic Oasis, The Garden Oasis, The Adventure Oasis, and The Lifestyle Oasis. Each zone is designed to elevate daily living with features such as garden lounges, two 50-metre infinity lap pools, a hydrotherapy pool, an aqua gym, two gyms with private gym pods, co-working lounges, function rooms, tennis and multi-purpose courts, outdoor fitness stations and child-friendly spaces like kid’s water play and entertainment. Other amenities include a firefly trail, a forest jogging trail, yoga pavilion, and culinary pavilions perfect for family gatherings.

PARKTOWN Residence is expected to achieve its Temporary Occupation Permit by mid 2030.

## SANAA receives 2025 Royal Gold Medal for architecture

The Royal Institute of British Architects (RIBA) has announced that SANAA, the collaborative practice of Japanese architects Kazuyo Sejima and Ryue Nishizawa, will receive the 2025 Royal Gold Medal for architecture. One of the world’s highest honours in architecture – presented on behalf of His Majesty the King – the medal recognises SANAA’s work to reshape the global design landscape, creating spaces that bring simplicity, light and elegance to the fore. For nearly three decades, SANAA’s work has pioneered sustainable, user-centred design and was praised by the 2025 RIBA Honours Committee for shaping “a universal language of architecture that resonates



Nishizawa (left) and Sejima (right) Photo: © SANAA

with people everywhere.” Balancing boldness with sensitivity to the local environment, their works “demonstrate that architecture can be both functional and profoundly elegant, offering a sense of calm amidst an increasingly complex and chaotic world.”

## Schneider Electric reveals findings of a new survey at Innovation Day 2025

Schneider Electric, a global leader in the digital transformation of energy management and automation, hosted Innovation Day on the topic 'Scaling up for a net zero Singapore' on 25 February 2025 at Marina Bay Sands.

Schneider Electric's Innovation Day 2025 is a premier stakeholder event where industry leaders gather to network and share best practices. This year's theme, "Scaling Up for a Net-Zero Singapore", reinforces the company's commitment to partnering with local organisations to support their transition to a low-carbon future. At the event, Schneider Electric shared the findings of a new survey of over 500 senior business leaders with the participants as well as showcased its latest solutions and held expert talks. Schneider Electric undertook a study in January 2025 to examine how businesses in Singapore are navigating the transition to clean energy, driven by rising electricity demand and sustainability commitments.

In the survey of more than 500 senior business leaders, 57 percent said they were planning to invest in solar power by 2030. The respondents also indicated plans to invest in hydropower (40 percent), bioenergy (29 percent), mobile nuclear<sup>1</sup> (26 percent) and wind energy (16 percent).<sup>2</sup>

This proactive stance is being driven partially out of a need to curb electricity-related emissions. Six in 10 business leaders said over half of their Scope 1 and 2 emissions come from electricity consumption. Among business leaders with plans to invest in renewable energy sources, the most cited motivation for the investment was the need to meet emissions targets.

Mechanisms for investments in solar, the most popular technology, included self-funded on-site installations (among businesses operating on owned premises), as well as the exploration of co funding options with landlords or tenants (among businesses operating on leased premises). Carbon concerns are also being fuelled by rising electricity use, with 82 percent of Singapore business leaders anticipating that their organisations will consume at least 10 percent more electricity this year than they did in 2020. Digital technologies, particularly AI, was the top reason for this; followed by the growing electrification of various systems and business growth leading to a larger operational footprint.

Nevertheless, business leaders said they would

Schneider Electric's Cluster President, Singapore and Brunei, Yoon Young Kim, at Innovation Day. Photo credit: Schneider Electric



continue investing in digital technologies and AI. Seven in 10 said they expected these technologies would help them cut their emissions in the long run.

Survey respondents came from 19 different industries; and included board members, C-suite executives, directors and senior managers from small, medium, and large local and multinational corporations. All are involved in leading the sustainability strategies for their organisations.

### Energy management systems gaining acceptance

To address rising electricity consumption and emissions levels, business leaders are showing a readiness to adopt various new technologies. Currently, half of all those surveyed said their businesses are using energy management systems.

When asked which other energy management technologies they would be keen on, 52 percent of respondents said they hoped to make an investment in battery storage systems and 49 percent said they would invest in smart grids.

### Challenges to raising renewable energy mix

Although 96 percent of companies have set renewable energy targets, confidence of meeting these goals was low. Only 30 percent were highly confident of achieving their 2025 targets, and 29 percent believe they would meet 2030 targets.

Respondents cited the high cost of renewable energy investments (31 percent) and the need for technology upgrades (24 percent) as challenges they faced. The availability of renewable energy in Singapore is also a hurdle, they said.

Against that backdrop, Yoon Young Kim, Cluster President Singapore and Brunei, said: "Given the importance of decarbonisation to our planet, the public and private sector must deepen the conversation on what it takes to raise the portion of renewables in the energy mix for businesses in Singapore. Digital technologies can play an important role in energy management and decarbonisation. Many of these technologies are



mature, proven and economically viable for businesses. This study is part of Schneider Electric's efforts to understand our stakeholders and their concerns, so we can better cater to their needs and advance progress on sustainability."

<sup>1</sup> Mobile nuclear refers to small modular reactors, which have been identified as a potential future solution for powering Singapore.

<sup>2</sup> Percentages exceed 100 percent as respondents were allowed to select more than one option.

## Schneider Electric and CPG Corporation sign MOU to accelerate decarbonisation in the built environment

On 25 February 2025, Schneider Electric, a leader in the digital transformation of energy management and automation, announced a strategic partnership with CPG Corporation, a leading provider of integrated solutions for the built environment, to collaborate on the development of greening Singapore's physical infrastructure.

The MOU was exchanged at Schneider Electric's 2025 Singapore Innovation Day in the presence of CPG Corporation's President and Group CEO, Tan Shao Yen, and Schneider Electric's Cluster President, Singapore and Brunei, Yoon Young Kim. As Schneider Electric's flagship stakeholder event, Innovation Day fosters strategic partnerships and drives best practices in sustainability and digital transformation. Aligned with "Scaling Up for a Net Zero Singapore", the theme of this year's Innovation Day, the collaboration highlights Schneider Electric's expertise in sustainable digital energy management solutions and CPG's extensive experience in sustainable green design, developing and delivering critical large-scale public and private infrastructure projects.

This partnership reflects the growing momentum for strategic collaborations in advancing decarbonisation and underscores the role of leading industry players in supporting Singapore's sustainability ambitions, accelerating the development of energy-efficient, intelligent buildings that contribute to a greener, more resilient urban landscape. As part of the MOU, Schneider Electric and CPG Corporation will collaborate to drive sustainability through new business opportunities. This includes cross-support on tenders and carbon advisory services, as well as joint content creation at CPG-hosted events and functions. Additionally, both companies will explore digital solutions and their applications to real-world challenges, developing a white paper to advance industry insights. Schneider Electric and CPG Corporation will also leverage each other's strengths



Yoon Young Kim (left) and Tan Shao Yen (right), with the signed MOU. Photo credit: Schneider Electric

to drive sustainable solutions across various sectors. Schneider Electric will work with CPG's Mechanical and Electrical, and Environmental Sustainability Design teams to propose energy-efficient solutions for sectors such as data centres and healthcare, targeting at least two projects for implementation. Schneider Electric will also partner with CPG's Facilities Management team to explore initiatives such as energy audits, equipment upgrades, and digital twin solutions, harnessing their combined expertise to enhance operational efficiency and sustainability, with at least one identified project. Tan Shao Yen, President and Group CEO, CPG Corporation, said: "Effectively addressing the climate crisis demands cross-sector collaboration and innovative, scalable solutions for a net-zero world. With CPG's deep expertise in sustainable, integrated built environment solutions and Schneider Electric's cutting-edge energy management solutions, we aim to develop lifecycle-driven approaches that deliver tangible decarbonisation outcomes." Yoon Young Kim, Cluster President, Singapore and Brunei, Schneider Electric, said: "This strategic partnership with CPG Corporation builds upon our joint vision for a net-zero future by accelerating decarbonisation efforts in the built environment sector. We look forward to leveraging our respective expertise to co-develop innovative and scalable solutions that will not only transform the sector but also drive the narrative shaping the future of sustainability in this industry."

## ULI expands thought leadership team in Asia Pacific



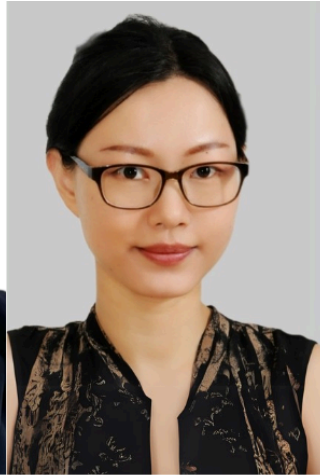
**MAY  
CHOW**

Chief Development Officer  
ULI Asia Pacific



**MARK  
COOPER**

Senior Director  
Thought Leadership  
ULI Asia Pacific



**JENNY  
ZHANG**

Director of Sustainability  
ULI Asia Pacific



**VIDYASHREE  
UNNIKRISHNAN**

Senior Researcher  
ULI Asia Pacific

Photo credit: ULI Asia Pacific

The Urban Land Institute (ULI) has boosted its research and thought leadership capabilities across Asia Pacific with the appointment of Mark Cooper as Senior Director, Thought Leadership of ULI Asia Pacific. Mark has more than 25 years' of experience as a real estate journalist, with 15 years covering the Asia Pacific region. He was formerly editor of industry magazines: *AsiaProperty*, *EuroProperty* and *IPE Real Estate*. Prior to joining ULI in Hong Kong, he was a freelance writer, researcher and consultant. Mark will produce research and thought leadership content in a variety of formats, focusing on ULI's core themes and global mission priorities around; sustainability and decarbonisation, housing attainability, capital markets and technology and innovation. On sustainability and decarbonisation, Mark will work with Jenny Zhang, Director of Sustainability, ULI Asia Pacific, who leads programmes around decarbonisation across the Asia Pacific region, notably the recent Low Carbon Emissions Steel Initiative in China's real estate sector. Jenny will be supported by Vidyashree Unnikrishnan, who also joined ULI in January as Senior Researcher and is based in Bangalore. Vidyashree has a Master's degree in Environmental Building Design from the University of Pennsylvania and was formerly ESG Manager for Grosvenor for two years.

May Chow, Chief Development Officer of ULI Asia Pacific, adds, "ULI is a member-centric organisation and we are passionate about collaborating as a powerful collective to deliver

industry impact as well as a significant membership value proposition. Our Thought Leadership team will build on our convening platform of regional events, including workshops and conferences, by highlighting key insights drawn from the expertise in the room and developing these in greater depth for wider distribution."

Alan Beebe, Chief Executive of ULI Asia Pacific, said: "Our members comprise professionals from across the real estate value chain and they are a hugely valuable source of industry expertise. Expanding our thought leadership capabilities in-house, allows us to channel much of this extensive knowledge, and firmly position ULI as an industry thought leader across Capital Markets, Housing Attainability and the Decarbonisation of the Built Environment. Mark is already a well established industry 'thought leader' and we are delighted to have him onboard to spearhead this regional initiative. Additionally, I would like to personally thank our philanthropic donors and corporate sponsors who have helped us to realise our vision, and we look to continue partnering with industry organisations to further support our mission priorities in Asia Pacific." Mark Cooper said: "I am delighted to join ULI and look forward to building on the success of market-leading reports such as *Emerging Trends in Real Estate Asia Pacific* and the *Home Attainability Index*. We plan to develop a broad range of thoughtful and useful content which will help members and the wider industry navigate an increasingly complex real estate landscape."

## Liu Jiakun receives the 2025 Pritzker Architecture Prize



Liu Jiakun, photo courtesy of The Hyatt Foundation/The Pritzker Architecture Prize



West Village, photo courtesy of Chen Chen

The Pritzker Architecture Prize announces Liu Jiakun, of Chengdu, People's Republic of China, as the 2025 Laureate of the Pritzker Architecture Prize, the award that is regarded internationally as architecture's highest honour.

"Architecture should reveal something — it should abstract, distill and make visible the inherent qualities of local people. It has the power to shape human behavior and create atmospheres, offering a sense of serenity and poetry, evoking compassion and mercy, and cultivating a sense of shared community," expresses Liu.

Intertwining seeming antipodes such as utopia versus everyday existence, history versus modernity, and collectivism versus individuality, Liu offers affirming architecture that celebrates the lives of ordinary citizens. He upholds the transcendent power of the built environment through the harmonizing of cultural, historical, emotional and social dimensions, using architecture to forge community, inspire compassion and elevate the human spirit.

"Through an outstanding body of work of deep coherence and constant quality, Liu Jiakun imagines and constructs new worlds, free from any aesthetic or stylistic constraint. Instead of a style, he has developed a strategy that never relies on a recurring method but rather on evaluating the specific characteristics and requirements of each project differently. That is to say, Liu Jiakun takes present realities and handles them to the point of offering sometimes a whole new scenario of daily life. Beyond knowledge and techniques, common sense and wisdom are the most powerful tools he adds to the designer's toolbox," states the 2025 Jury Citation, in part.

Liu creates public areas in populated cities where the luxury of space is largely absent, forging a positive relationship between density and open space. By multiplying typologies within one project, he innovates the role of civic spaces to support the breadth of requisites for a diverse society. West Village (Chengdu, China, 2015) is a five-storey project that spans an entire block, visually and contextually contrasting with the matrix of characteristically mid- and high-rise buildings. An open yet enclosed perimeter of sloping pathways for cyclists and pedestrians envelopes its own vibrant city of cultural, athletic, recreational, office and business activities within, while allowing the public to view through to the surrounding natural and built environments. Sichuan Fine Arts Institute Department of Sculpture (Chongqing, China, 2004) displays an alternate solution to maximizing space, with upper levels protruding outward to extend the square footage of a narrow footprint.

"Cities tend to segregate functions, but Liu Jiakun takes the opposite approach and sustains a delicate balance to integrate all dimensions of the urban life," comments Alejandro Aravena, Chair of the Jury and 2016 Pritzker Prize Laureate. He continues, "In a world that tends to create endless dull peripheries, he has found a way to build places that are a building, infrastructure, landscape and public space at the same time. His work may offer impactful clues on how to confront the challenges of urbanization, in an era of rapidly growing cities."

Throughout his works, Liu demonstrates a reverence for culture, history and nature, chronicling time and comforting users with familiarity through modern interpretations of classic Chinese architecture.



# TSLAW Tower

## A Striking Grade A Corporate Office Tower

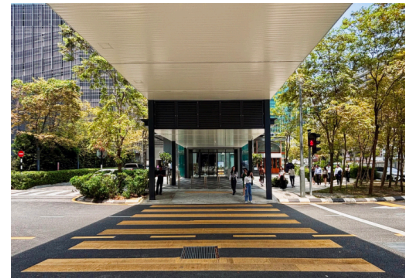
*TSLAW Tower is a 48-storeys-tall Grade A office tower designed by UIG Architects Sdn Bhd – an architectural firm committed to design excellence and the integration of sustainable and leading-edge technologies.*

Located in the heart of the Tun Razak Exchange (TRX) district, TSLAW Tower exemplifies contemporary architectural excellence while addressing the complexities of urban integration and structural innovation.

The development of TSLAW Tower sits on a challenging L-shaped site formed from eight amalgamated bungalow plots with two MRT underground lines running beneath its northern section. These constraints necessitated a sophisticated engineering approach with a reinforced raft and bored pile foundation to ensure stability and minimise underground transit vibrations. The resultant form is a slender crystalline skyscraper making its mark on the surrounding cityscape.

The building façade is a defining feature of this development, with triangular perforated screens, full-height low-E glazing and an integrated LED lighting system. Natural daylight floods the office interiors while controlling heat gain, balancing efficiency and aesthetics. The tower is transformed into an illuminated landmark at night, with dynamic lighting displays on the facade.





TSLAW Tower fosters a vibrant and efficient workplace environment. The grand double volume reception lobby, with its premium materials, sets the tone for an elevated arrival experience. The destination-control lift system optimises vertical movement, reducing congestion and improving accessibility for tenants and visitors. The office floors, designed with flexibility in mind, empower tenants to create various workspace layouts, with high floor-to ceiling heights enhancing the feeling of openness. The upper floors with its breathtaking panoramic views of the Kuala Lumpur skyline, provide an inspiring backdrop for work and leisure.

At the street level, a landscaped urban plaza creates an inviting transition between the building and the neighbouring buildings. Thoughtfully curated retail and F&B outlets activate the space, offering a dynamic experience for tenants and visitors.

A striking glass cube entry portal, directly connected to the TRX MRT station via a covered walkway, enhances accessibility and reinforces the tower's integration with the city's public transport network. This seamless connectivity encourages public transit, reducing congestion and improving overall accessibility.



TSLAW Tower is also a Green Building Index (GBI) Certified development, reflecting its commitment to sustainability. Its energy-efficient façade, optimised natural lighting, and eco conscious features contribute to reduced environmental impact while ensuring a comfortable and modern workspace.

**Location:** Kuala Lumpur, Malaysia

**Client:** Pedoman Cekap Sdn Bhd

**Architect:** UIG Architects Sdn Bhd

**Completion:** 2021

**Gross Floor Area:** 39,196 square metres

**Text and Photography:** UIG Architects Sdn Bhd



# Yanmar Tokyo

## A Building With A Ship-Like Design

*Nikken Sekkei Ltd., an architectural, planning and engineering firm from Japan, with headquarters in Chiyoda, Tokyo, has completed the reconstruction plan for the Yanmar Tokyo office on the east side of Tokyo Station, one of Japan's most iconic train terminals.*

**Y**aesu, the business district to the east of the station, was a centre for logistics by canal in the Edo era. Today, it has become a popular district with some of the best development potential in the country, with several major redevelopment projects taking root. The building bridges Tokyo Station and the Yaesu area and acts as a branding hub for Yanmar, a company that develops technology for “food production” and “energy conversion” worldwide.

### **A ship-like building “sets sail” toward the world**

The street-facing façade toward Tokyo Station is clad in pipe louvers. On the ground level and below, the façade's form mimics the bow of a ship, and above, a sail. Nikken Sekkei aimed for a strong form that prioritises purity, symbolism, and autonomy, with an awareness of the axis between the site and the adjacent intersection. The design was made

possible by the corner condition of the site, and speaks to both the situation of the building and the client company.

### **Public space as a branding hub**

On the south exterior wall is a large-scale pipe louver greening system covering approximately 800 square metres. The greenery can be perceived from anywhere in the common areas of the office floor, such as the elevator hall, restrooms, and refreshment corners. The green wall can also be seen from the neighbouring building to the south, and provides a natural environment within the city

In the three-storey atrium on the lower level, louvered greenery is grown using hydroponics. This is a biophilic public space, rare in the vicinity of Tokyo Station, where anyone can come and go freely, and where those on the go might want to stop and linger. The building also features spaces born from Yanmar's recognition of the great



importance of rice farming in Japan. On the first floor is a gallery, and on the second floor is a restaurant that highlights rice and agriculture. The atrium creates a continuous bustling atmosphere from the basement to the second floor, and the space itself serves as a piece of content that communicates the Yanmar brand.

**A living showroom for an environmentally conscious company**

Energy-saving and high-efficiency Yanmar products are used in the equipment of this building, making it a living showroom for customers.

A variety of Yanmar products are incorporated – including a cogeneration system using gas engine generators and a radiant heating and cooling system using high-efficiency gas heat pump air conditioners

– to achieve high BCP and environmental performance. In addition, the building incorporates the latest technologies for disaster prevention, environment, and living comfort.

- Location:** Tokyo, Japan
- Client:** Seirei Kosan CO., LTD
- Architect:** Nikken Sekkei Ltd
- Site Area:** 1,483.79 square metres
- Total Floor Area:** 21,775.59 square metres
- Building Height:** 69.950 metres
- Completion:** 2022
- JV, Joint Design, Supervision, Consultancy, Etc.:** Samurai Kashiwa Sato (Atrium design supervision, artwork).
- Photo Credit:** Kawasumi • Kobayashi Kenji Photograph Office



# The Bay Hub

## A New Urban Landmark

*CAN DESIGN, an emerging architecture and design firm based in Hong Kong, recently completed The Bay Hub as a newly renovated Grade-A office landmark in Kowloon, Hong Kong. The project combines functionality with elegance, fostering creativity and wellbeing for tenants and visitors alike.*

The key focus of the renovation included transforming the dining area on the ground floor, and the lobbies, with particular attention to reimagining the spatial design of the ground-floor lobby. This effort aims to provide corporate tenants with an elevated sensory and functional experience. CAN has meticulously crafted an urban sanctuary that promotes for a healthy and elegant lifestyle. Inspired by nature, the design seamlessly integrates outdoor elements into the interiors, creating a serene yet dynamic atmosphere. The lobby, with its impressive 9.3-metre ceiling height, exudes openness and transparency, setting the tone for sophistication and prestige. As a landmark in the East Kowloon CBD, The Bay Hub symbolises modernity and innovation while embodying the energy and vibrancy of the surrounding business district.

### **A harmony of nature and urban energy**

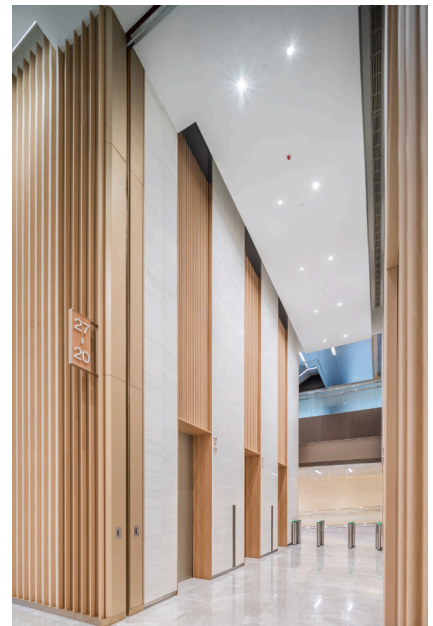
Strategically located near the Kai Tak and Kowloon Bay MTR stations, The Bay Hub offers seamless connectivity to Kowloon and Hong Kong Island. Its

design harmoniously combines the essence of nature with the vitality of urban life. Stepping into the building, one immediately enters a space that balances tranquillity with dynamism, making it more than just a workplace, it is a new urban landmark that inspires potential and creativity. The newly designed water feature at the entrance replaces the former planting area, introducing an element of natural flow into the space. Verdant greenery sets a refined and tranquil tone for the office environment, immersing visitors in a serene and comfortable atmosphere. This upgrade significantly enhances the overall quality and user experience of the space.

### **Elegance in details**

The newly unveiled branding for The Bay Hub plays a pivotal role in its identity, offering tenants a strong sense of visual recognition through its clean and impactful design. The logo combines uniqueness with versatility, adaptable across various media to ensure consistency and continuity of the brand image. Interior signage, crafted from materials such as wood, warm whites, and stainless steel,





complements the overall design aesthetic with its fine textures. This creates a welcoming yet professional spatial ambiance, providing visitors with a distinctive sense of belonging and comfort.

**Commitment to sustainability and employee wellbeing**

The optimisation works at The Bay Hub have been thoughtfully designed to meet the modern demands of enhancing employee wellbeing and advancing sustainability. The property has received

the highest local and global sustainability ratings, including LEED Platinum from the US Green Building Council, and Beam Plus from Hong Kong Green Building Council.

**Location:** Hong Kong, China

**Client:** PAG

**CAN Design's Scope:** Asset upgrade - architecture, interiors, signage

**Size:** 3,000 square metres

**Photos:** Yimuchuan Cultural Media Co., Ltd - Jason Ng



RETAIL PROJECT

# Huafa New Town Phase Six

## A Vibrant Live-Play Development

*HOK, a global design, architecture, engineering and planning firm, has designed a stunning retail and residential development in Zhuhai, China.*

This retail and residential development serves as an important hub for Huafa Group's landmark Huafa New Town community in the south China city of Zhuhai.

Situated along a major transportation interchange, the development provides a central and vibrant live-play environment for this modern, fast-growing metropolis.

On the west end of the development, a 645,000-square-foot shopping mall includes a theatre, supermarket and department store.

A 270,000-square-foot health and wellness centre anchors the site's eastern edge. A large promenade spans the area between, weaving together anchor stores, greenery and waterfront.

Two 30-storey apartment towers located along the development's northwest border offer spectacular garden views and connect to shopping and amenities. Retail spaces share fluid massing silhouettes, pedestrian bridges, indoor-outdoor transition spaces and seamless circulation routes.

The marquee feature, a 1,115-foot-long street canopy made up of a steel frame and lightweight ETFE (ethylene tetrafluoroethylene) membrane, hovers 65 feet above ground.

Deriving its fluid, organic form from patterns found in nature, the canopy's web creates a sculptural and light-capturing focal point while shielding shoppers from the elements.

Zhuhai Huafa Architectural Design Consulting Co. served as the local partner for the project.

**Location:** Zhuhai, China

**Size:** 3 million square feet / 280,000 square metres and 34 acres / 14 hectares

**Awards:** ENR Global Best Projects – Retail and Mixed-Use Developments Award of Merit

**Services by HOK:** Architecture, Interiors, Landscape Architecture, and Planning + Urban Design

**Completion:** 2014

**Photo Credit:** Terrence Zhang



# ARCHIDEX 2025: One Show, Two Venues. What To Expect At This Year's Largest Architecture Exhibition In Malaysia



*This year, ARCHIDEX 2025 is bigger and better than ever! The show will be held at two venues – MITEC and KLCC – making it the nation's largest international architecture, interior design and building exhibition. The 24th edition in 2025 is set to break new expectations and the debut of Kuala Lumpur Architecture Week. Dato' Vincent Lim, Joint Organiser of ARCHIDEX tells us why ARCHIDEX 2025 will be the most dynamic and expansive edition yet.*

**When:** 21st-24th July 2025

**Where:** MITEC, Kuala Lumpur, Malaysia

**When:** 23rd-26th July 2025

**Where:** KLCC, Kuala Lumpur, Malaysia

**Congratulations on the soft launch of ARCHIDEX 2025. Can you tell us when is ARCHIDEX 2025 taking place and why is it set to be the most ambitious show till date?**

This year's event marks a monumental leap forward for Asia's leading architecture business event, as ARCHIDEX 2025 expands across two venues: the Malaysia International Trade and Exhibition Centre (MITEC) from July 21 to 24, and the Kuala Lumpur Convention Centre (KLCC) from July 23 to 26. This dual-venue setup is part of a week-long celebration known as the KL Architecture Week, spanning 6 days and 2 venues covering 34,000 square metres and attracting approximately 56,000 visitors from over 110 countries.

The strategic expansion increases the exhibition space by over 20 percent, creating a vast platform for networking and collaboration. This allows 850 exhibitors to showcase the latest innovations in architecture, interior design, and building materials.

Key highlights include the co-located FENESTEX exhibition at MITEC, featuring the latest fenestration technologies that includes windows,



Dato' Vincent Lim



ARCHIDEX 2025 targeted to have 56,000 visitors within the 6-day exhibition.



ARCHIDEX creates a comprehensive platform offering a spectrum of opportunities aimed at fostering collaboration and innovation within the architecture and building community.

doors, glass and facades. Meanwhile, ARCHIDEX at KLCC will feature the immersive World of Works, which explores transformative workplace design trends. Both venues will also feature architecture and building material technologies from over 10 countries and regions. These additions ensure that ARCHIDEX 2025 will be the most dynamic and expansive edition yet, providing industry leaders with a platform to solidify their positions in the regional architecture and design industry.

### **What can attendees expect from the inaugural KL Architecture Week?**

As part of the Kuala Lumpur Architecture Festival, the Kuala Lumpur Architecture Week 2025 is an inaugural celebration that transforms the traditional exhibition experience into a vibrant festival. By combining the ARCHIDEX exhibition and DATUM Conferences with social discovery experiences, it offers a unique experience that enriches the city's architectural landscape. This event serves as pivotal platform for industry professionals to network and collaborate, significantly enhancing the Business Events or MICE sector.

### **What topics will be included in the DATUM 2025?**

DATUM 2025 that is running concurrently with ARCHIDEX is one of the largest architectural conferences to unite over 2,000 delegates and international speakers to share their architectural philosophies and ideas, as well as to connect for knowledge-sharing and business collaborations across the 6-day landmark event. It is organised by Pertubuhan Akitek Malaysia (PAM) and typically includes plenary sessions and discussions on contemporary architectural themes.

# Fabulous 40: SILA Turns 40, Highlights The Critical Role of Landscape Architects In Singapore

*The Singapore Institute of Landscape Architects (SILA) is turning 40 in 2025! SILA is a non-profit organisation representing the Landscape Architectural professional in Singapore. Over the years, SILA has achieved many milestones in its profession and practice. To tell us more about SILA's journey, is President of SILA, Dr. Srilalitha Gopalakrishnan. In this interview, Dr. Srilalitha, shares the key milestones of SILA, and highlights the critical role of landscape architects in the face of climate change. She also shares more details of the upcoming Singapore Landscape Architecture Award 2025.*



**This year marks the 40th year of the Singapore Institute of Landscape Architects (SILA). What are the 5 turning points in this long journey that revived or changed the landscape architecture field/practice here?**

SILA's 40-year journey is remarkable, especially considering that our nation is only 60 years old. This underscores how deeply embedded the landscape architecture profession has been in shaping policymaking and Singapore's development.



If I were to highlight five defining milestones in the profession and practice, they would be:

- The evolution from Garden City to City in a Garden
- Skyrise greenery establishing Singapore as a Capital City for Vertical Green
- The SILA Accreditation Initiative, strengthening professional standards
- The ABC Waters Professional Programme, integrating water-sensitive urban design
- City in Nature as a core pillar of SGP 2030, reinforcing sustainability and nature-based urban ecosystems approach at a national level

**What is the most important item on SILA's agenda today?**

With climate change and biodiversity loss threatening the future of our cities, the role of landscape architects has never been more critical. We are uniquely positioned to lead the way in designing nature-based solutions that create a more resilient, nature-positive future. At SILA, our top



Dr. Srilalitha Gopalakrishnan. Photo credit: SILA

priority is to empower our professionals to take on this responsibility – to be the champions of urban ecosystems and shape cities where people and nature thrive together. This means investing in



SILA CSR Event – Build with Heart 2.0 (Group photo).  
Photo credit: SILA



SILA AMKTC  
Student Landscape  
Design Competition  
2024 – Award  
winners. Photo  
credit: SILA

Singapore  
Landscape  
Architecture  
Awards 2022 –  
Residential  
Category  
Winner: Martin  
Modern. Photo  
credit: SILA



capacity building, strengthening outreach, and forging strong partnerships across the built environment. Most importantly, we are committed to having a seat at the table where key decisions are made, ensuring that landscape architecture drives real, lasting impact.

**How would you rate the adoption of digital technology and AI by landscape architects and practitioners in Singapore?**

To be honest, the adoption of digital technology hasn't been uniform across the industry. Some firms have fully committed to the shift, others are still building their capabilities, and some have yet to take the leap. I understand that this journey isn't the same for everyone – factors like firm size, financial risk appetite, cash flow stability, and resource investment all play a role. That said, the momentum is undeniable, and we're already seeing the positive impact of digital adoption. I truly believe this wave of change will only grow stronger, and I'm excited for what's ahead.

**What will be the major highlights for the upcoming Singapore Landscape Architecture Award 2025?**

As we celebrate this milestone year, SLAA 2025 will be more than just an awards ceremony – it will be a tribute to the people who have shaped SILA and the landscape architecture profession in Singapore. This year, we are honouring not only the award winners but also the past Presidents of SILA, whose leadership over the past 40 years has been instrumental in driving the profession forward. We are also excited to collaborate with NUS and URA on a special exhibition showcasing the landmark projects that have defined Singapore's landscape.

This will be an opportunity to recognise the landscape architects and key stakeholders whose vision and dedication have left a lasting impact.

Adding to the significance of this year's event, National Parks Board (NParks) will also host the Landscape Excellence Assessment Framework (LEAF) Award Ceremony alongside SLAA. LEAF celebrates landscapes that exemplify ecological, climatic, and social resilience, reinforcing Singapore's City in Nature vision.

Bringing these two awards together creates a unique platform to engage with industry leaders, innovators, and policymakers who are shaping the future of sustainable urban development.

**As we look ahead, what two key trends are emerging in Singapore's landscape architecture?**

The City in Nature vision marks a fundamental shift – from a people-centric design approach to a life-centric one. Our cities are no longer just spaces built for humans but shared ecosystems where people, nature, and biodiversity coexist.

As landscape architects, we have a responsibility to design not just for human users but also for the ecological and biodiversity needs of our urban green spaces.

Another exciting shift is the growing emphasis on an urban science-driven, evidence-based approach to planning. By quantifying the ecosystem services provided by our designs, we can push the boundaries of our profession – creating urban green spaces that are not only beautiful but also scientifically innovative and ecologically resilient. This is an exciting time for us, and we're eager to play our part in shaping a more regenerative, nature-positive future!

# ASA In Collaboration With TTF To Launch Architect'25 Under The Theme Of “Past Present Perfect” With The Aim Of Elevating Thai Architecture To The Global Stage

*The Association of Siamese Architects under Royal Patronage (ASA), in collaboration with TTF International Co., Ltd, has officially announced the 37<sup>th</sup> edition of Architect Expo, the largest building technology exposition in ASEAN.*

This year's event is themed “Past Present Perfect”, emphasizing the significance of architecture in shaping stories from the past to present and future through a diverse range of showcases and seminars, alongside cutting-edge innovations for design and construction solutions from over 1,000 leading Thai and international brands. The event is set to take place from April 29 to May 4, 2025, at Challenger Hall, IMPACT Muang Thong Thani, and it is expected to draw an impressive crowd of approximately 325,000 visitors.

Mr. Asae Sukhyanga, President of The Association of Siamese Architects under Royal Patronage (ASA), said that the Architect Expo, now in its 37<sup>th</sup> consecutive edition, is currently recognized as the largest building technology exposition in ASEAN. Architect'25 aims to serve as a platform for showcasing and promoting professional architectural works and the association's activities. It also acts as a platform for presenting designs, innovative construction products, and technologies related to architecture, while promoting the architectural profession among its members, students, and the general public.

“Architect'25 builds upon the success of previous exhibition, which commemorated the 90<sup>th</sup> anniversary of ASA. This year, it is presented under the theme “Past Present Perfect”. It serves as a great opportunity to recall the journey of Thai architecture from the past to the present, exploring how its stories have been passed down through



time. Until today, the fact that architects have been collaborated with diverse professions across all regions allows us to explore and go over the trajectory of Thai architecture through different eras. It features the combination of techniques and cultures in the past, the adaption of environment and the societal demand in each period, and connecting what they were with what they are to explore directions and narratives of people and identities of architects so that we can shape the future together,” he said.

Beyond its main objective of connecting architectural stakeholders globally through exhibition, seminars and knowledge sharing for architectural development, the Architect'25 also plays a pivotal role in enhancing the quality of life in society, reflecting art and culture, and driving the national economy. Additionally, the event serves as a platform for showcasing designs, building materials, and knowledge-sharing about construction technology and innovation on an international scale. It brings together leading brands from Thailand and abroad, all exhibited in a massive 75,000-square-metre venue. With its comprehensive offerings of exhibitions, Architect'25 is expected to attract an impressive attendance of over 325,000 visitors.

Mr. Supaman Munka, General Manager of TTF International Co., Ltd, the organizer of Architect'25, disclosed the outcomes of "Architect'24" and the goals for "Architect'25" that the event has shown growth compared to previous editions, despite challenges in the current global business and economic landscape.





Mr. Supaman Munka, General Manager of TTF International Co., Ltd.



Mr. Asae Sukhyanga, President of The Association of Siamese Architects under Royal Patronage (ASA).

Currently, the number of Thai exhibitors for Architect'25 has increased by 6.35 percent compared to the same period last year, reflecting on Thai entrepreneurs' confidence in the Architect Expo. Meanwhile, the number of international exhibitors shows a declining trend due to global economic factors and the organizer's policy to promote and focus on fostering local exhibitors.

Leading exhibitors who have already confirmed their participation include SCG, MAKITA, JORAKAY, TOSTEM, VG, TOA, the PANTAMITR Group, the CONNEXT Group, S-ONE, BOONTHAVORN, BLACK & DECKER, DOS, CRISTINA, EDL, TAK+WG, among others. Additionally, several new exhibitors have joined this year, such as NIPPON PAINT, FAMELINE, MELATONE, SAINT-GOBAIN, FELTECH, TOPMIX, M KUCHE, and INOL GROUP.

The highlights, aside from the association's exhibition, are six exhibitors taking up the largest spaces of Thematic Pavilion in the event's history, which are (1.) S-ONE, in collaboration with architects from Looklen Architect, (2.) NIPPON PAINT, in collaboration with architects from pbm (3.) VANACHAI, in collaboration with architects from FLAT12x (4.) VG, in collaboration with architects from ativich / studio (5.) WOODDEN, in collaboration with architects from POAR, and (6.) FAMELINE, in collaboration with architects from Architects & Associates (A&A).

For the visitors, TTF aims to increase the proportion of Professional visitors, such as architects, real estate developers, engineers, and construction contractors. In the previous Architect Expo, professionals accounted for approximately 55 percent of all visitors, while Home Owners and End Users made up 45 percent. It is anticipated that the proportion of professional visitors will grow to 60 percent at Architect'25.



The image shown is from Architect'24.

"We are committed to delivering a high-quality event that meets the needs of entrepreneurs in the industry. Our focus is on creating opportunities for businesses to connect with their primary target audiences as much as possible to foster and exchange their business networks, while promoting innovation in architecture and construction within the region," said Mr. Supaman.

Architect'25, the 37<sup>th</sup> ASEAN's Largest Building Technology Exposition, will take place from 29 April to 4 May, 2025 at Challenger Hall, IMPACT, Bangkok. The expo serves as a platform for showcasing, gathering, and educating about innovative products for building and construction industry from over 1,000 global exhibitors.

For more information, visit [www.ArchitectExpo.com](http://www.ArchitectExpo.com) and Facebook page: [www.facebook.com/ASAArchitectExposition/](https://www.facebook.com/ASAArchitectExposition/)  
Pre-registration is now available via <https://architectexpo.com/prereg/EN>

# Architect'25 Exhibitor Highlights

architect'25  
PAST  
PRESENT  
PERFECT

Check out some of this year's Architect'25 exhibitors...



Photo credit:  
OLYO

## OLYO

The real estate sales & marketing have changed – experience OLYO platform today! The future of real estate is here, and OLYO.io is already transforming the industry. The company's cloud-based, AI-powered platform is revolutionising sales with real-time 3D technology, interactive walkthroughs, and seamless access across mobile, tablets, and large touch screens. This means no more static images or endless meetings. With OLYO.io, buyers can explore properties online, walk through every apartment in real time, experience actual balcony views, review contracts, and sign instantly – from anywhere. This isn't the future – it's happening now. OLYO is live, fully functional, and ready for you. Try it today and be part of the revolution.

<https://olyo.io/>



furniture, and decorative elements, Inox-Flex delivers a sleek, modern aesthetic for commercial and residential spaces.



[www.blissmetal.com](http://www.blissmetal.com)

## Bliss Metal

INOXTEEL-flex is a lightweight stainless steel laminate with a nano-ceramic coated surface and a PVC foam board backing. Designed for stylish and functional interiors, it offers anti-fingerprint, anti-bacterial, and anti-mould properties for durability and easy maintenance. Its flexibility allows seamless application on curved surfaces, while the roll-to-roll manufacturing ensures consistent quality. With effortless installation, INOXTEEL-flex reduces material and labour costs, making it a cost-effective alternative to solid metal sheets. Ideal for walls,



**Project name: Private Residence**

**Location: Nawamin 24 Rd., Bangkok, Thailand**

**Photo credit: Maxiswood**



## Maxiswood Products Co., Ltd

Maxiswood is a Thailand-based company committed to crafting exquisite building facades using composite timber. The company's innovative products replicate the authentic look of real wood without the need to cut down trees. By utilising waste sawdust from various natural wood sources in furniture factories and the timber industry, the company prioritises sustainable practices and tree conservation.

Maxiswood's primary focus is on environmental responsibility and tree preservation. Its composite timber not only emulates the appearance of real wood but also offers easier installation and maintenance. Designed to meet the highest aesthetic and safety standards, Maxiswood's products combine beauty with practicality for any architectural project.

[www.maxiswood.com](http://www.maxiswood.com)



# BAU brings inspiration for the future of the industry

*In times of major challenges and uncertainties in the construction industry, BAU – the world’s leading trade fair for architecture, materials, and systems – presents itself as a beacon of hope for the industry.*

# BAU

(Copyright: Messe München GmbH)



Photo: © Copyright 2025, Messe München GmbH, all rights reserved

**D**espite the trade fair being shortened by one day, well over 180,000 visitors (2023: 190,000) came to the fully booked Trade Fair Center Messe München from January 13 to 17 to explore innovations and trends presented by 2,230 exhibitors (2023: 2,260) from 58 countries (2023: 49 countries). In addition to the number of participating countries, the international share of exhibitors also reached a new record of 52 percent.

“At the start, expectations for BAU 2025 were tempered by the challenging economic environment. However, the response from both exhibitors and visitors has been clearly positive. BAU provides courage and confidence, especially in these times,” says Dr. Reinhard Pfeiffer, CEO of Messe München, reflecting on BAU 2025.

Dieter Schäfer, Chairman of the BAU Advisory Board, is also very satisfied: “BAU 2025 sent a strong signal for the construction industry. Despite difficult conditions, the industry is proving its future viability through innovation, change, and drive. The trade fair provides fresh impetus and strengthens the exchange that is essential for sustainable growth and progress. Together, we are shaping the construction world of tomorrow.”

## **BAU demonstrates resilience and inspires confidence in the construction industry**

Felix Pakleppa, Managing Director of the Central Association of the German Construction Industry (ZDB), reaffirms the role of BAU as the leading industry event: “With the key topics of transformation, homes of the future, and resource



Photo: © Messe München GmbH

and climate protection, BAU 2025 is once again providing trailblazing ideas for the future of building. It remains an essential platform for manufacturers, planners and the construction industry to drive progress together.”

BAU 2025 focused on the key topics of “resilient, climate-friendly construction”, “transformations city/countryside/urban district”, “resource efficiency”, “modular, serial, productive” and “cost-effective construction”. These topics capture the current spirit of the industry, says Andrea Gebhard, President of the Federal Chamber of Architects: “This year's BAU has shown that sustainability is no longer just an objective but a guideline for our actions. From innovative building materials and digital planning processes to integrative approaches for urban spaces, the diversity and quality of the solutions presented are impressive and must continue to receive strong federal government support given their importance in shaping society.”

BAU Exhibition Director Matthias Strauss thanks his team for their outstanding performance: “Despite the tough situation in the industry, we managed together to achieve a successful outcome for BAU 2025. Well done to all the colleagues!”

### Over 50 percent share of international exhibitors

For the first time in its more than 60-year history, international companies made up more than half of the total exhibitors. 52 percent of the 2,230 exhibitors in total were based outside of Germany.

In addition to Germany, the countries most strongly represented on the exhibitor side at BAU 2025 were Italy, China, Türkiye, Austria, Poland, Belgium, Switzerland, Spain, the Netherlands, and Greece.

On the visitor side, the trend from 2023 continued with a high level of international participation. At the previous event, the share of



Photo: © Messe München GmbH

international visitors reached 40 percent. This year, it was 44 percent. Alongside Germany, the top visitor countries included Austria, Italy, Switzerland, Poland, Türkiye, China, Romania, the Czech Republic, Spain, and Croatia.

### Exhibitors and visitors give top marks

The successful outcome of the trade fair is also reflected in the survey carried out by the Gelszus market research institute, in which 95 percent of the exhibitors rated the fair as good to excellent. 91 percent also believe it has the right trade fair character. 94 percent of exhibitors gave top marks for quality, and 91 percent for the internationality of the visitors. Visitors once again gave best marks for BAU 2025, with 97 percent of the respondents rating the fair as good to excellent.

### Supporting programme: special shows and award ceremonies

The five key topics were present not only in the exhibition area but also in the specialist forums and special shows. In addition, renowned architects such as Carlo Ratti, Satoshi Ohashi, Verena von Beckerath, and Elisabeth Endres gave talks at “The Future of Building” forum. The innovative strength of the construction industry was also evident at the award ceremonies. Competitions such as “Built on IT – building professions with a future”, the Balthasar Neumann Prize and the BAKA Award presented awards to their winners in Munich. The Founders Fight Night, a competition for start-ups, celebrated its debut at BAU. What was special about it was that the companies showcased their products in a boxing ring, with audience applause determining the winner.

The next BAU will be held in Munich from January 11 to 15, 2027. As early as 2026 (March 24 to 26), digitalBAU in Cologne will showcase solutions and products from the construction software sector.

# BAU 2025 Exhibitor Highlights

# BAU

(Copyright: Messe München GmbH)

Discover some of the exhibitors at this year's BAU 2025 fair...



Photo credit: dormakaba

## dormakaba



dormakaba presented MotionIQ, an innovative technology that significantly reduces energy loss through automatic doors.

Thanks to precise door control, MotionIQ minimises the time that doors are held open and, depending on the application scenario, enables energy savings of up to 50 percent compared to standard solutions. This also contributes to reducing a building's carbon footprint.

An assessment of the savings potential for each use case is made possible by dormakaba's Door Efficiency Calculator, a scientifically validated tool that provides architects and building planners with reliable data for sustainable decisions.

MotionIQ, which was previously only available for swing doors, is now also available for automatic sliding doors and was shown for the first time at BAU 2025 together with the automatic energy-saving sliding door ST PRO Green, which has fine-framed, thermally separated profiles.

[www.dormakaba.com](http://www.dormakaba.com)



## Engineering Edge (Singapore) Pte Ltd

CORROSHIELD® is a leading brand specialising in high-performance, corrosion-resistant fastening solutions for demanding environments. At BAU 2025, the company showcased its premium range of fasteners, engineered for reliability in even the harshest conditions. Its advanced coatings and designs, including the innovative LEVIN® Drill Point technology, enhance installation efficiency and provide long-lasting durability. Trusted in construction, roofing, and cladding applications, CORROSHIELD® fasteners offer exceptional resistance to rust and wear. With over 30 years of expertise, Engineering Edge (Singapore) continues to set the industry standard for quality, performance, and innovation, delivering superior fastening solutions for projects worldwide.

[www.engineering-edge.com](http://www.engineering-edge.com)

A hand holding a sample of Aeroputz – Aerolight's innovative Aerogel-based plaster. Photo credit: Aerolight



## Aerolight GmbH

Aerolight's CERABRAN Aeroputz revolutionises facade insulation, offering a lightweight, breathable, and highly efficient alternative for both historic restorations and modern constructions. By integrating aerogels with natural lime and clay, it provides outstanding thermal insulation while maintaining the structural integrity of heritage

buildings. Its moisture-regulating and mould-resistant properties ensure long-term durability without trapping humidity, making it ideal for preserving historic facades. As a biozide-free, sustainable solution, CERABRAN Aeroputz helps architects and conservationists achieve energy-efficient renovations while respecting traditional craftsmanship. If you are looking for advanced facade insulation for historic and modern buildings, then look no further than CERABRAN Aeroputz.

[www.aerolight.net](http://www.aerolight.net)



Photo credit: fischer

### fischerwerke GmbH & Co. KG

Economic and easy-to-install fischer products for structural reinforcement with carbon fiber-reinforced polymers (CFRP) laminates and carbon fiber fabrics (CF) were presented to the broad BAU trade audience for the first time. Also included was a completely new range of mortars for concrete repair to reprofile damaged concrete coverings and components or to fill voids and holes in concrete components. Concrete topping solutions for increasing the load-bearing capacity of reinforced concrete ceilings and bridge structures as well as injection systems for creating subsequent reinforcement connections were also part of the program. Also included: The fischer FCC-B bridge cap anchor for renovation projects in bridge construction.

[www.fischer.de](http://www.fischer.de)

### Viva Composite Panels Pvt Ltd

Viva, one of Asia's leading ACP manufacturers, made a strong impression at BAU 2025 with the debut of SOLID X—India's first pre-coated, ready-to-install solid aluminium panels. Engineered for exceptional strength, fire safety (A1 rating), and weather resistance, SOLID X offers unmatched



Photo credit: Viva

durability and sleek aesthetics. The product garnered widespread acclaim from architects and industry professionals, reaffirming Viva's commitment to innovation and sustainable solutions. With a focus on eco-friendly manufacturing and cutting-edge design, Viva's successful participation at BAU 2025 marked a significant step towards redefining global façade and interior design.

<https://vivaacp.com>

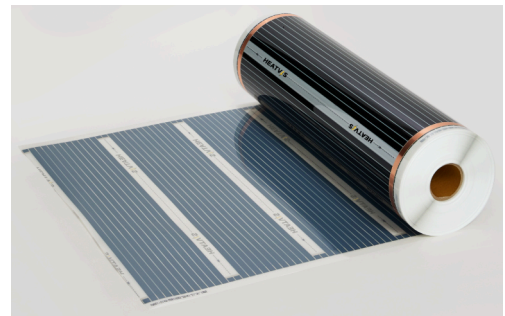


Photo credit: Heatvis

### Heatvis

Heatvis is a leading manufacturer specialising in advanced electric heating films and panels. Proudly produced in South Korea and established since 2013, Heatvis has partnered with renowned construction giants such as VINCI (France) and Bechtel (USA), delivering cutting-edge heating solutions for both residential and industrial applications. The company's products leverage advanced infrared technology to provide energy-efficient, sustainable heating while ensuring a healthy and comfortable living environment. Unlike traditional heating methods, Heatvis' electric systems harness infrared radiation, keeping the air clean and breathable.

[www.heatvis.com](http://www.heatvis.com)

# Fire Safety Measures In Buildings

*Fire safety is one of the most important considerations when planning a building's design. It is to ensure the safety of the building's occupants, the property and the business operations. In this article, we asked industry experts on the important fire safety measures in buildings for fire prevention.*



**Mak Ka Weng,  
Managing Director,  
Fiready Pte Ltd  
comments:**

In 2024, SCDF conducted around 15,000 fire safety enforcement checks, with the most common violation being the failure to maintain firefighting equipment. Larger organisations often have HSE officers or fire safety managers to monitor equipment, but smaller ones may overlook maintenance. Some organisations hire low-cost providers lacking expertise, such as electricians or plumbers unfamiliar with fire systems. To ensure proper maintenance, it is crucial to engage reputable fire contractors who follow the code of practice.



A well maintained Patent System 88i fire alarm panel c/w valid servicing sticker and no faults on panel. Photo credit: Fiready Pte Ltd



**Kelvyn Ong, Founder, King Fire Pte Ltd and  
Certified Fire Safety Manager comments:**

Fire safety is a crucial element for buildings and infrastructures worldwide, essential for protecting lives and assets. At King Fire, we emphasise the importance of implementing comprehensive fire protection systems – ranging from fire alarms and detection systems to gas suppression and sprinklers. Being compliant with local and international safety standards is key, alongside regular inspections and timely maintenance. Fire prevention goes beyond meeting regulations; it is about creating a safe environment where risks are minimised, and emergency responses are swift and effective. Investing in reliable fire safety measures ensures long-term protection and peace of mind for businesses and communities globally.

Intelligent fire alarm with detection, suppression & monitoring



# Doors & Windows: Smarter, Safer & Energy-Efficient

*We asked some companies to tell us how developments in doors and windows are making residential properties smarter, safer and energy-efficient.*



Carisa Mann. Photo credit: Magnetite

## **Carisa Mann, CEO of Magnetite Singapore, comments:**

The advancement of door and window technology has significantly contributed to making residential properties safer, greener and more comfortable.

Windows are not just blocking out wind and water anymore, they can be well insulated to save energy when air conditioning if they are made out of the right material, like framing out of uPVC of thermally broken aluminium and seal airtight.

In busy tropical cities like Singapore not only the heat can be blocked by modern windows but noise also. With residents living often close to each other and noise hotspots like highways and MRT, effective soundproofing of windows can make a big impact on comfort and health.

With new solutions, like our magnetic retrofit double glazing system, it is not even necessary to change the window to enjoy these benefits of modern systems, we can turn existing standard windows into energy efficient and soundproof windows with our Noise Shield and Heat Shield systems. This is a particularly suitable solutions for

buildings where window change is not permitted, like in many condos, BTO's or commercial spaces.



Magnetite Classic Noise Shield, The Sail at Marina Bay, Singapore. Photo credit: Magnetite Singapore



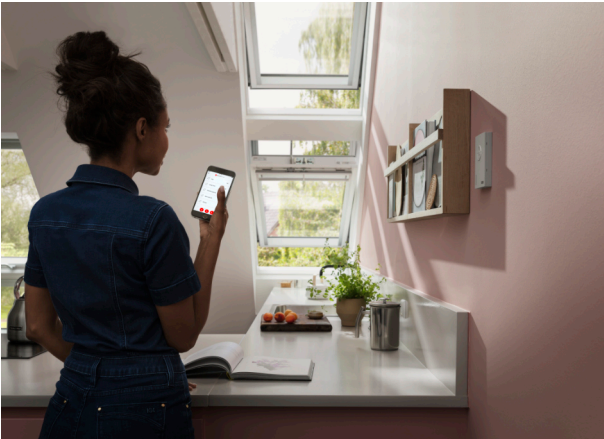
Magdalena Stefanowicz

## **Magdalena Stefanowicz, Advanced Energy and Indoor Comfort Specialist at The VELUX Group comments:**



Monitoring carbon dioxide levels, humidity levels, and room temperature are key considerations to ensure a healthy indoor climate year-round.

VELUX ACTIVE with NETATMO is a smart home solution that enhances indoor comfort control through automated sensor-based management of roof windows and shading devices. VELUX ACTIVE's smart sensor monitors temperature, humidity, and CO2 levels in your home, automatically adjusting VELUX products based on real-time conditions to create a healthier home with effective heat protection. It also allows homeowners to create personalized automated settings for optimal indoor comfort.



VELUX ACTIVE with NETATMO is a smart sensor-based solution that intelligently automates the opening, closing and shading of VELUX roof windows, to deliver a healthier indoor climate for all.

---

### **Daniele Campione, Founder of Deluxe Systems comments:**

To provide a comprehensive answer, it is important to clarify that not all parts of the world are at the same level in terms of technological development in the doors and windows sector.

In Europe, and particularly in Italy, the evolution of window and door systems over the past 20 years has been exponential. We have moved from low-performance solutions to highly technological systems with advanced thermal and acoustic insulation and a strong focus on sustainability. Today, high-end windows and doors can include up to 80 percent recycled materials, automated opening and closing systems controllable via apps or sensors, and even glass with integrated photovoltaic panels.

The situation in Southeast Asia is quite different. At Deluxe Systems, we have been entering this market for the past couple of years, and in September 2025, we will inaugurate our



Daniele Campione. Photo credit: Deluxe Systems

showroom in Singapore. We have noticed a significant delay in the adoption of these technologies compared to Europe. To bridge this gap, we believe it is essential to support architectural firms and property developers already at the design stage. This allows for targeted solutions to improve the building's energy efficiency. The response from the firms we collaborate with has been extremely positive: there is great enthusiasm for the innovations we can introduce, not only in terms of products but also in the design of the window opening, a crucial aspect for energy performance. Similarly, the property developers we engage with are becoming increasingly aware of the importance of smart and efficient buildings. This focus enhances comfort and security while also representing a key value for international buyers, who are increasingly attentive to environmental aspects.



APEXFINE Sliding Glass Door System. Photo credit: Deluxe Systems

**PROMOTE YOUR TRADE SHOW, EVENT OR CONFERENCE WITH US****APRIL & MAY 2025****MEGABUILD**  
INDONESIA**Megabuild Indonesia 2025**

24th-27th April 2025

Jakarta International Convention Center (JICC)  
Senayan, Hall A, Hall B  
Jakarta, Indonesia

Megabuild Indonesia 2025 is the leading building materials, interior design, architecture, and construction exhibition & conference in Indonesia. Now in its 22nd edition, Megabuild Indonesia 2025 will have the theme of 'Innovating for Sustainable Tomorrow'. Besides the exhibition, the show promises an exciting line up of programmes designed to provide valuable insights and networking opportunities. In last 21 editions, the show has registered about 400,000 visitors from 45 countries and 5,000 exhibitors from 25 countries, amounting to a total transaction value of \$2.2 billion. Take your business to the next level by participating in Megabuild Indonesia 2025.

Get your FREE ticket here:

<https://megabuild.co.id/ticket>[www.megabuild.co.id](http://www.megabuild.co.id)**Architect'25**

29th April-4th May 2025

Challenger Hall, IMPACT Muang Thong Thani,  
Thailand

Architect'25 is one of ASEAN's largest building technology expositions that connects, inspires and

improves the building and construction industry. The six-day show becomes the epicenter for new product launches, building material demos, workshops, industry thought leader sessions, industry professional networks, and etc. Architect'25 will once again become a destination for worldwide exhibitors and visitors from the Building & Construction sector.

[www.architectexpo.com/2025](http://www.architectexpo.com/2025)**Asia Pool & Spa Expo 2025**

10th-12th May 2025

China Import & Export Fair Complex,  
Guangzhou, China

As Asia's the leading trade fair for swimming pool, sauna, spa and bath industries, the 20th Asia Pool & Spa Expo warmly welcomes your participation once again! Today's sauna & spa industry in China is mainly driven by the health-conscious young generation, who especially enjoy an occasional spa or steam bath in the gym. This trend was further substantiated by the increase of spa & sauna exhibitors at Asia Pool & Spa Expo 2024. Chinese homegrown brands are also on the rise in the international market.

About 75 percent of the national exhibitors were active in foreign trade and 89 percent Chinese makers/suppliers attended to meet overseas buyers. 19 years of endeavour has made Asia Pool & Spa an irreplaceable platform for global enterprises to promote their foreign and domestic business, build a positive brand image, and communicate with worldwide insiders.

<http://www.asiapoolspaexpo.com/index.php?lang=en>

**Send your show details and show logo to [amita@newreachmedia.com.sg](mailto:amita@newreachmedia.com.sg)**



26 - 29 MAY 2025 | HONG KONG SAR  
**ASIA PACIFIC SUMMIT**

**Urban Land Institute (ULI) Asia Pacific Summit 2025**  
26th-29th May 2025  
Regent Hong Kong, Kowloon,  
Hong Kong SAR

ULI Asia Pacific Summit is a signature real estate event that yearly attracts over 700 decision makers from across Asia Pacific and beyond. It brings together the whole industry under one roof. The Asia Pacific Summit is the preeminent forum for real estate and land use professionals to share ideas and exchange best practices. This year, ULI Asia Pacific Summit 2025 will explore the theme, "Building a Golden Age". As the Asia Pacific region cements its position as a global growth engine, the real estate industry is poised to lead transformative opportunities that shape the future of cities and communities.

<https://apacsummit.uli.org/>

## JUNE 2025

### guangzhou international lighting exhibition

**Guangzhou International Lighting Exhibition 2025**  
9th-12th June 2025  
China Import and Export Complex,  
Guangzhou, China

GILE features the latest innovations in LED technology, smart and energy-efficient lighting solutions, lighting production technology, AIoT technology and cross-disciplinary solutions. It occupies a total of 26 halls and 260,000 square metres of exhibition space hosting 3,383 exhibitors from 20 countries and regions concurrently with GEBT.

<https://guangzhou-international-lighting-exhibition.hk.messefrankfurt.com/guangzhou/en.html>

[www.facebook.com/archibuildmag](https://www.facebook.com/archibuildmag)

## JULY 2025



**ARCHIDEX 2025**  
21st-24th July 2025  
MITEC, Kuala Lumpur, Malaysia

23rd-26th July 2025  
KLCC, Kuala Lumpur, Malaysia

ARCHIDEX, the international architecture, interior design and building exhibition, is the largest architecture exhibition in Malaysia. The show unites the brightest minds in architecture, interior design and building, creating an unparalleled platform for networking, collaboration, and showcasing groundbreaking products, materials, technologies and solutions. The 24th edition in 2025 is set to break new ground with international participation and the debut of Kuala Lumpur Architecture Week.

[www.archidex.com.my](http://www.archidex.com.my)

## SEPTEMBER 2025



ASEAN Landscape  
Gardening Expo

**ASEAN Landscape & Gardening Expo 2025**  
2nd-4th September 2025  
IMPACT Exhibition Centre,  
Bangkok, Thailand

This event is Southeast Asia's premier gathering dedicated to landscape and gardening. The main exhibits will encompass a wide range of topics, including landscaping, gardening, outdoor design, and sustainable living solutions.

<https://www.aseanlandscape.com>

Mar/Apr 2025 Archibuild 43



### BEX Asia 2025

3rd-5th September 2025  
Marina Bay Sands, Singapore

BEX Asia brings together the built environment community; providing inspiration, education, sourcing and benchmarking to Built Environment professionals while providing exhibitors a place to do business and showcase their products. In 2024, the show welcomed 9,982 professionals from 51 countries/regions. BEX Asia is the most efficient, resourceful place to get networked, save time, money and effort on the way. With robust infrastructure and urbanisation development across the ASEAN region, construction output is projected to grow at an average of 6.1% annually\* (\*Source: Construction Industry Outlook 2025/2026, Atradius). This growth represents a unique opportunity for businesses to expand their reach and influence.

Join BEX Asia and tap into this booming market. BEX Asia is a co-locating tradeshow of IBEW, Asia Pacific's most comprehensive event on the built environment.

[www.bex-asia.com](http://www.bex-asia.com)



### International Built Environment Week (IBEW) 2025

3rd-5th September 2025  
Marina Bay Sands, Singapore

IBEW is spearheaded by BCA International Pte Ltd, a wholly owned subsidiary of the Building and Construction Authority, in partnership with RX Singapore. Widely regarded as Asia Pacific's most comprehensive event on the built environment, IBEW is the ideal platform for the global built environment community to come together and

share knowledge, discover innovative technologies, exchange valuable experiences and explore business opportunities.

[www.ibew.sg](http://www.ibew.sg)



### Concrete Show SEA Indonesia 2025

10th-13th September 2025  
Jakarta International Expo (JIEXPO),  
Kemayoran, Indonesia

Concrete Show Indonesia 2025 returns as the premier event for the concrete and construction industries, showcasing the latest innovations, technologies, and trends that are shaping the future of infrastructure development. As the construction landscape evolves, Concrete Show Indonesia remains at the forefront, providing a unique platform for industry professionals to connect, collaborate, and explore cutting-edge solutions that drive efficiency, sustainability, and excellence in concrete applications. Explore the future of Indonesia's concrete sector at Concrete Show Southeast Asia Indonesia 2025, happening from September 10 to 13, 2025, at JIExpo Kemayoran.

<https://www.concreteshowseasia.com/>



### Construction Indonesia 2025

10th-13th September 2025  
Jakarta International Expo (JIEXPO),  
Kemayoran, Indonesia

As Southeast Asia's premier and most anticipated construction event, Construction Indonesia 2025 is set to break new ground by expanding its scope to

include the burgeoning Building Innovation industry. This expansion marks a significant milestone in the evolution of the event, as it brings together a broader spectrum of the construction and building sectors under one roof. The event will serve as a dynamic platform for industry leaders, innovators, and professionals to explore cutting-edge technologies, sustainable practices, and innovative solutions that are transforming the way we design, build, and manage infrastructure and buildings. Explore the future of Indonesia's construction sector at Construction Indonesia 2025, happening from September 10 to 13, 2025, at JIExpo Kemayoran.

<https://www.constructionindo.com/>

ASEAN  
**LIGHT + DESIGN**  
EXPO 2025

**ASEAN Light + Design Expo 2025**

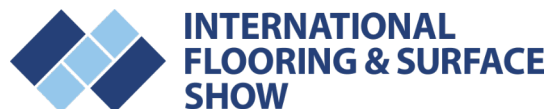
17th-19th September 2025

Hall 5, IMPACT Exhibition & Convention Centre  
Bangkok, Thailand

ASEAN Light + Design Expo is the premier platform where lighting innovation meets design excellence. No longer just an exhibition, it has advanced into a thriving marketplace that integrates leading-edge LED technology with smart lighting solutions. The expo stands at the forefront of redefining how lighting influences design and shapes perceptions. As a key player in the industry, this platform serves as a dynamic hub for innovative solutions that combine lighting innovations with aesthetic designs. Recognizing the essential role of lighting in shaping environments, ASEAN Light + Design Expo is instrumental in the transformation of residential, commercial, and retail spaces alike. The exhibition features state-of-the-art decorative and architectural lighting solutions, along with advanced smart lighting systems tailored to elevate everyday experiences. By promoting collaboration and knowledge exchange, ASEAN Light + Design Expo connects industry leaders, designers, and innovators, building an ecosystem that drive progress within the lighting sector. Previously known as LED Expo Thailand, the event has evolved to embrace a broader vision, establishing itself as

ASEAN's leading hub for lighting and design advancements.

<https://www.aseanlightdesignexpo.com>



**INTERNATIONAL  
FLOORING & SURFACE  
SHOW**

**Floortech Indonesia 2025**

17th-20th September 2025

ICE BSD, Indonesia

Floortech Indonesia is a dedicated exhibition that brings a variety of flooring options for Indonesia's Asian-climate homes. The exhibition is poised to be the central business platform that promotes Indonesia as the trading hub for import and export of flooring products along with its manufacturing technologies, machinery, installation systems and auxiliary solutions for manufacturers in the production and supply industries.

[www.floortechindonesia.com](http://www.floortechindonesia.com)



**Refrigeration  
& HVAC  
Indonesia**

**Refrigeration & HVAC Indonesia 2025**

24th-26th September 2025

Jakarta International Expo (JIEXPO),  
Kemayoran, Indonesia

The Refrigeration and HVAC (RHVAC) market in Indonesia is poised for growth, driven by the expanding infrastructure, industrial needs, and escalating demand for sustainable, energy-efficient solutions. As Indonesia's urban population grows, so does the need for effective climate control, refrigeration, and air quality solutions. With increasing government initiatives focused on energy efficiency and reducing greenhouse emissions, the RHVAC industry is evolving rapidly, presenting abundant opportunities for local and international

players to tap into this thriving market. Indonesia's market for air conditioners alone is projected to continue its growth trajectory, with consumer demand rising steadily in both residential and commercial sectors. Additionally, sectors such as food processing, pharmaceuticals, and data centres rely heavily on state-of-the-art refrigeration and climate control, ensuring a diverse and sustained market demand for RHVAC technologies.

<https://refrigeration-hvacindonesia.com/>

## OCTOBER 2025



**Eco Expo Asia 2025**  
28th-31st October 2025  
Asia-World Expo, Hong Kong

Eco Expo Asia is a global trade platform for the environmental protection industry that showcases the latest green products, equipment and state-of-the-art technology. The fair provides B2G, B2B and B2C opportunities for the green industry through its strong support from Hong Kong, Mainland China as well as international government authorities and industry associations.

[www.hktdc.com/event/ecoexpoasia/en](http://www.hktdc.com/event/ecoexpoasia/en)

## NOVEMBER 2025



**GLASSTECH ASIA  
FENESTRATION ASIA**

6 – 9 Nov 2025 | Jakarta, Indonesia

**Glasstech Asia and Fenestration Asia 2025**  
6th-9th November 2025  
Indonesia Convention Exhibition (ICE) Hall 7,  
BSD City, Indonesia

Glasstech Asia and Fenestration Asia 2025 is the leading exhibition and conference for the glass industry in Southeast Asia. The show brings together the brightest minds and leading companies in the glass industry for three days of exhibitions, conferences, and networking opportunities. To be held in Jakarta, the exhibition aims to provide a vital platform for professionals to explore the latest advancements in glass manufacturing, facade design, and sustainable construction.

[www.glasstechasia.com.sg](http://www.glasstechasia.com.sg)

FOLLOW US ON

## SOCIAL MEDIA



[www.facebook.com/archibuildmag](http://www.facebook.com/archibuildmag)



[www.x.com/archibuildmag](http://www.x.com/archibuildmag)



[www.instagram.com/archibuildmag](http://www.instagram.com/archibuildmag)

**YOUR  
ADVERTISEMENT  
COULD  
BE HERE**

*Contact us for more information*

**ADVERTISE  
YOUR  
BUSINESS WITH US**

*Contact Archibuild today!*